

How To Minimize Gutter Type 1A Endoleaks With Chimney EVAR (Ch/EVAR): How Does A Standard Protocol Help; How To Treat Them When They Occur

David J Minion, MD
University of Kentucky Medical Center
Lexington, KY





Disclosures

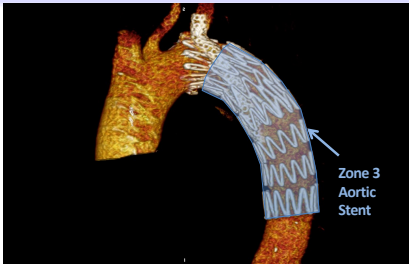
- Intellectual property ownership




Retro-Sandwich Configuration




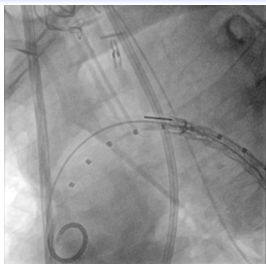
Retro-Sandwich Configuration



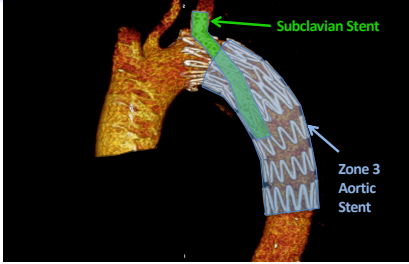
Zone 3 Aortic Stent



Deploy Zone 3 TEVAR




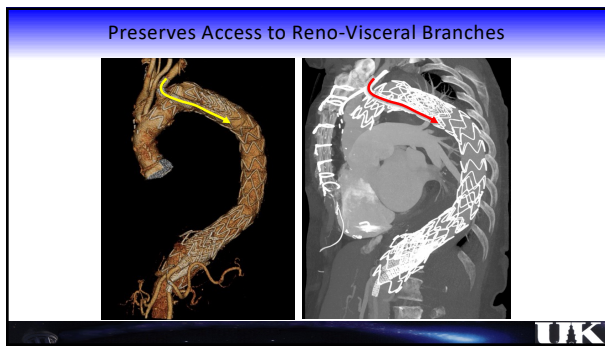
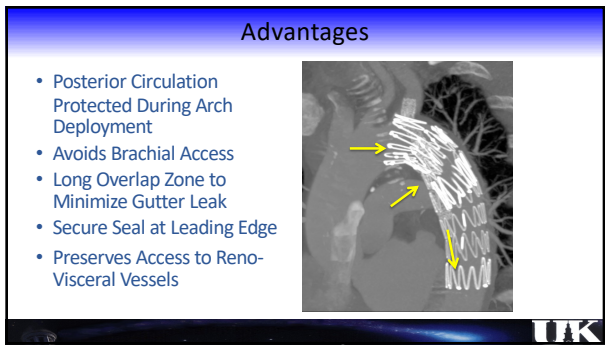
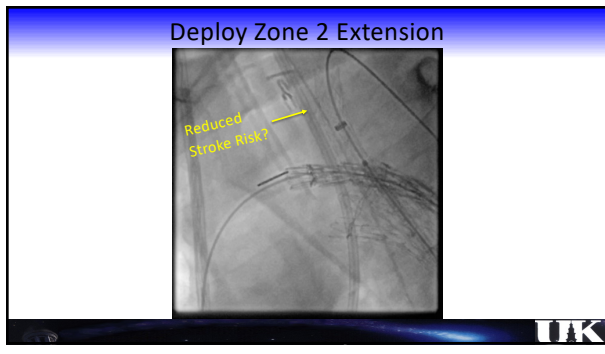
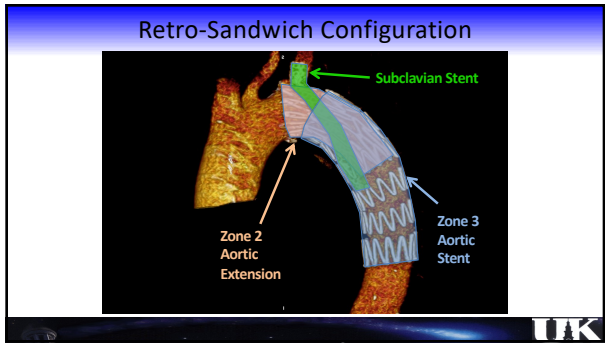
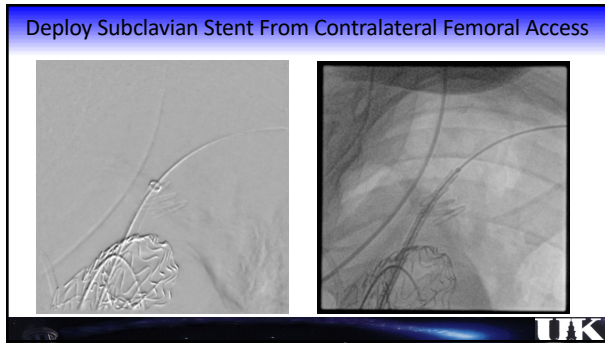
Retro-Sandwich Configuration



Subclavian Stent

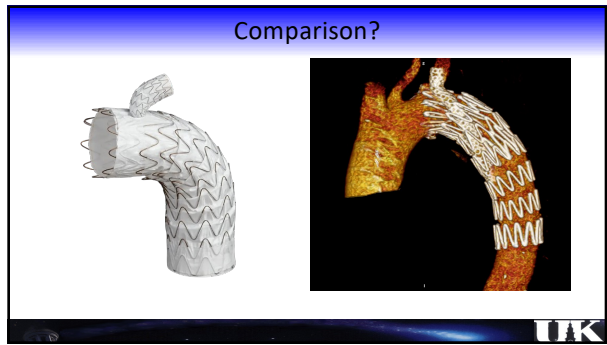
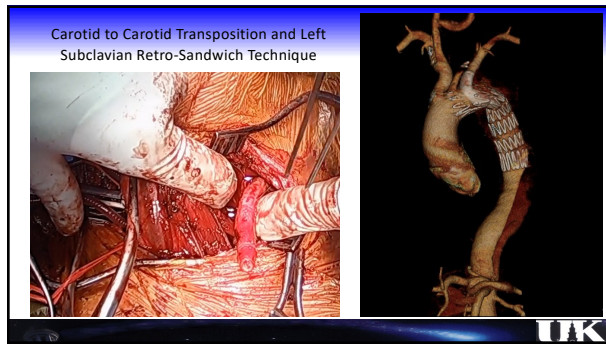
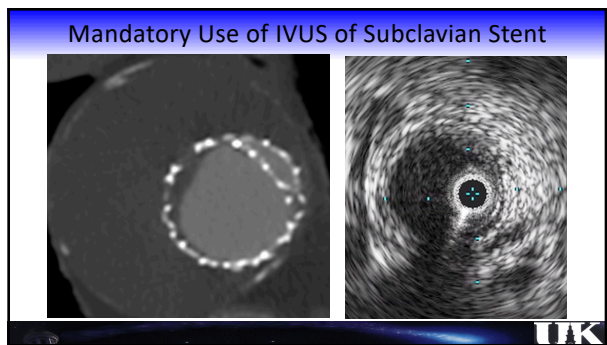
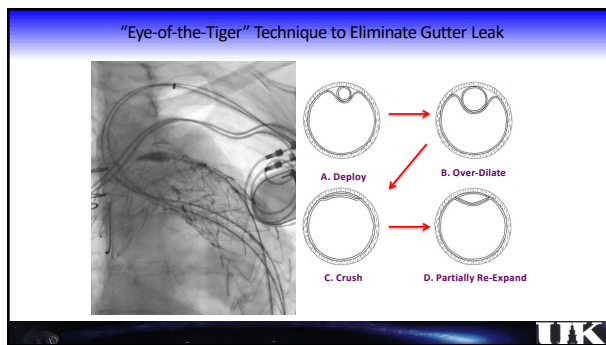
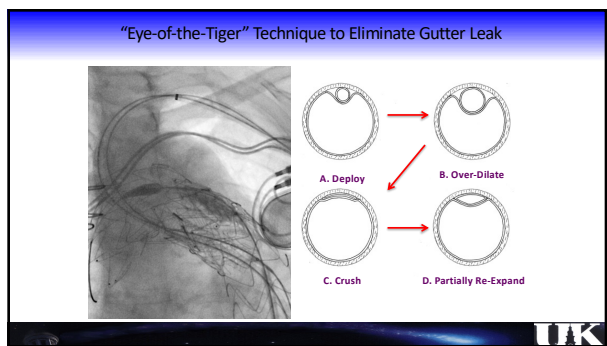
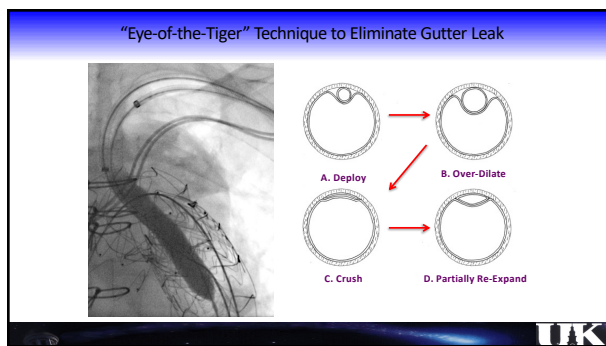
Zone 3 Aortic Stent





Additional Key Maneuvers

UK



Comparison?

- Apples
 - Branched Grafts
- Peaches
 - Specifically Engineered
- Cherries
 - Select Patients
- Oranges
 - Parallel Grafts
- Lemons
 - Spare Parts
- Cranberries
 - All Comers

Gore TBE Exclusion Criteria treated in My Cohort

Anatomic

- Previous endovascular repair of DTA with a non-Gore device
- Significant thrombus or atheroma in aortic arch
- Planned coverage of left carotid artery or celiac artery

Systemic

- Pregnant woman at provision of informed consent
- Degenerative connective tissue disease (eg, Marfan syndrome, Ehlers-Danlos syndrome)
- Known history of drug abuse within 1 year of treatment

Results

	Gore TBE	RetroSandwich	p value
Number	216	46	
Longest Follow-Up	5 years	8 years	
Zone 1 Extent	0 (0%)	15 (33%)	p<0.05
Procedural Failure	10 (4.6%)	0 (0%)	NS
30-Day Lesion Related Mortality	1 (0.5%)	1 (2.2%)	NS
30-Day Disabling Stroke	4 (1.9%)	0 (0%)	NS
30-Day New Dissection	13 (6.0%)	0 (0%)	NS
Late Type I/III endoleak	13 (6.0%)	2 (4.3%)	NS
Late Aortic Rupture	1 (0.5%)	0 (0%)	NS
Late Branch Vessel Occlusion	0 (0%)	3 (6.6%)	p<0.05

Conclusions

- A standard protocol can greatly minimize gutter leaks in parallel endografts and achieve comparable results to branched grafts.
- Key strategies include:
 - Long overlap zones.
 - Non-round parallel grafts as needed (Eye of the Tiger molding).
 - Mandatory intra-operative branch IVUS

Thank You