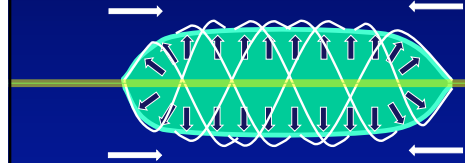
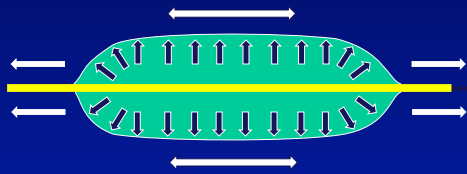


Flexible Angioplasty Balloons

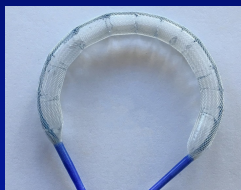
Tim Chuter, MD
Professor Emeritus
Department of Surgery, UCSF

Conflict of Interest

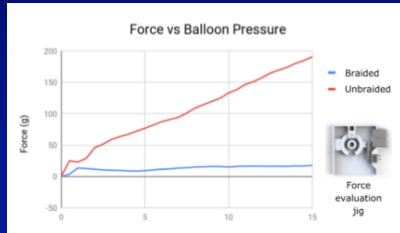
Tim Chuter MD is the Founder and
President of West Coast Catheter, a medical
device company



“Flexibility”

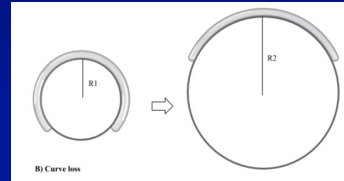


Straightening Force

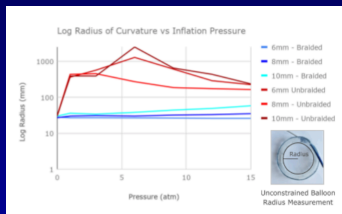


Curve Retention

The degree of curvature that persists, in the absence of external constraints



Curve Retention



Magic Glue (Pressurized Water)

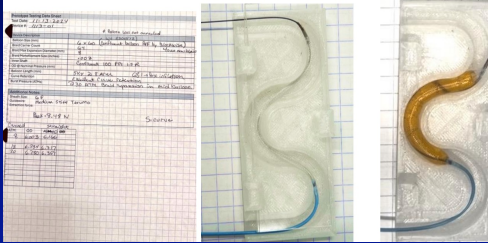


No Jigs

The main function of a curved balloon is to protect perivascular tissues from straightening force. There can be No external support (Jig) during balloon pressurization.ig.

Tight Angles





Testing Sequence

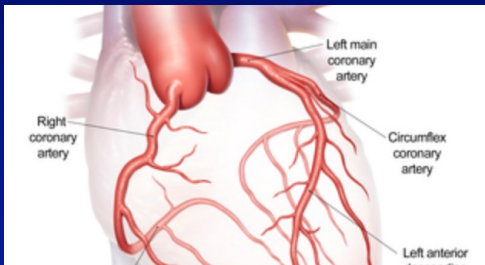
Insertion through curved access artery to target
 4 ATM inflation (baseline shape)
 Deflation to 2 ATM
 Removal from JIG
 Re-inflation to 25-35TM



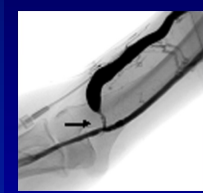
Assessment

Balloon Shape, Shape Memory, Conformability
 Balloon Dimensions, Compliance, Removal force

Coronary Arteries



Dialysis Access (Arterial Inflow)



Dialysis Access (Venous Outflow)



Tibial Arteries



Iliac Arteries



Maxillary Sinuplasty

