

# Interventions After Open Surgery for TAA: What and When

Prof. Dr. Goetz M. Richter  
 Director Clinic Diagnostic and Interventional Radiology

Prof. Dr. Philipp Geisbuesch  
 Director Clinic Vascular and Endovascular Surgery  
 Klinikum Stuttgart, Germany  
 Aortic Center Stuttgart

# Nothing to disclose

2

# Our Cohort Since 2013

228 Arch Repair + FET

Challenges: Early survival  
 Side branch occlusion(s)  
 Malperfusion syndrome(s)  
 False lumen expansion

TEVAR + FEVAR 98  
 TEVAR alone 33 **67% Interventions**  
 Side br. Interv. 24  
 Visc. a. stents 6

# 62f, Heavy Chest Pain 8/20

## Immediate Ascending Repair

# Again Severe Chest Pain 12/20

## Root Redo, Valve and Arch Repair, FET

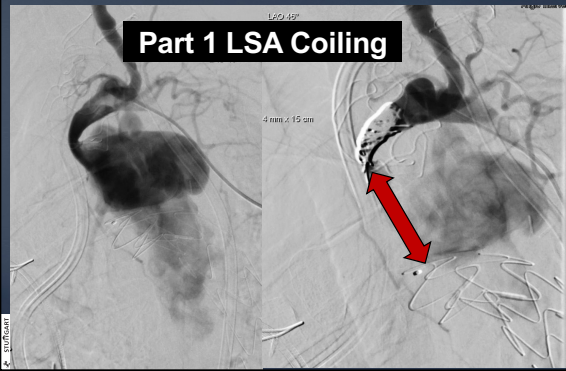
# Oopss!

## What Went Wrong?

### FET in the False Lumen! LSA Widely Distracted

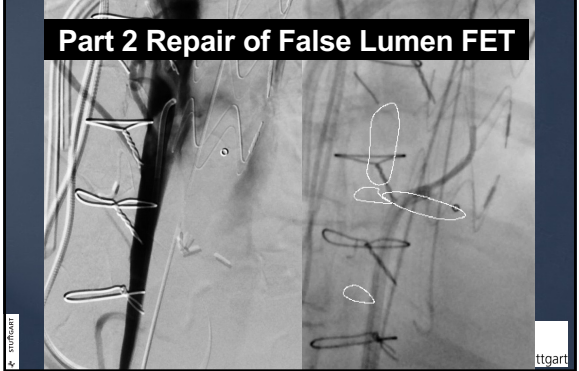
### Interventional Repair Part 1

7



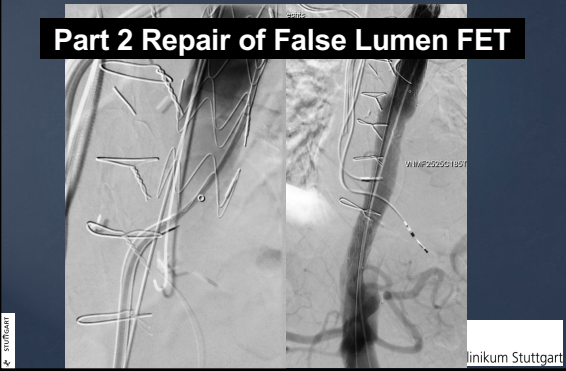
### Interventional Repair Part 2

8



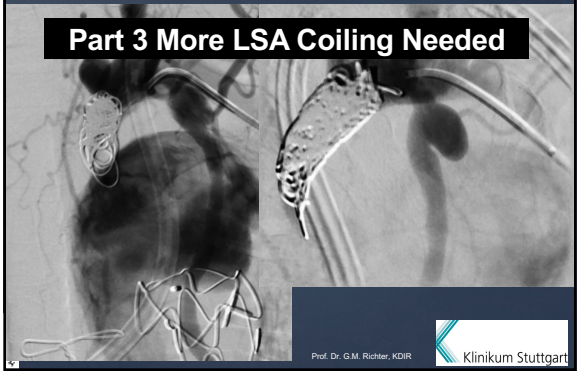
### Interventional Repair Part 2

9



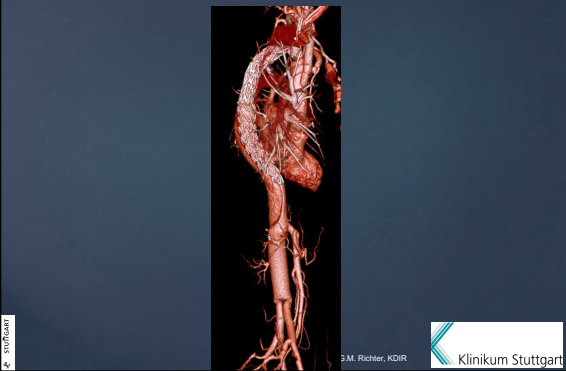
### Interventional Repair Part 3

10



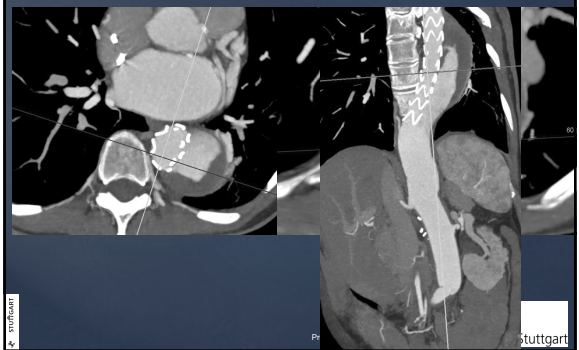
### In 02/21 So Far So Good

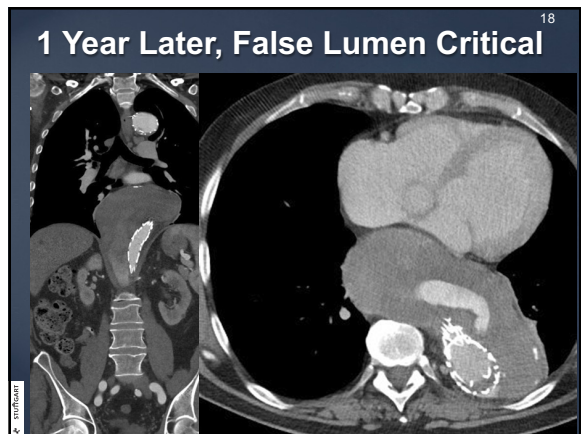
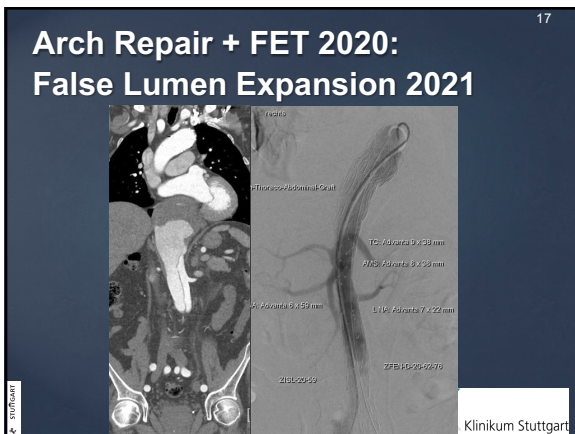
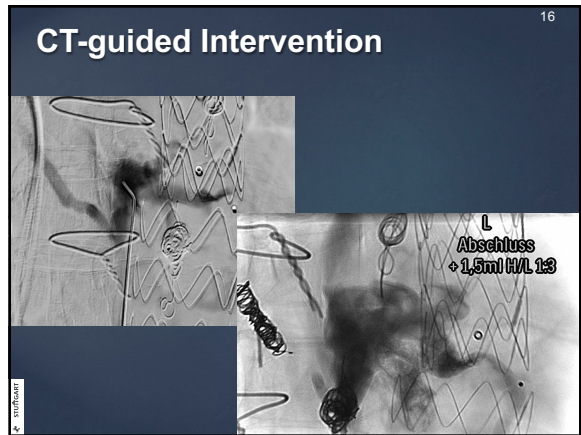
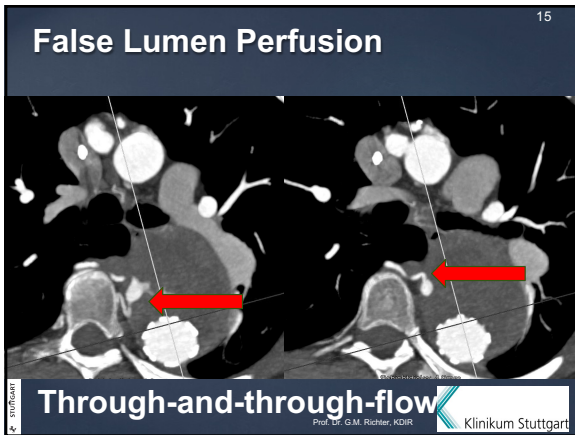
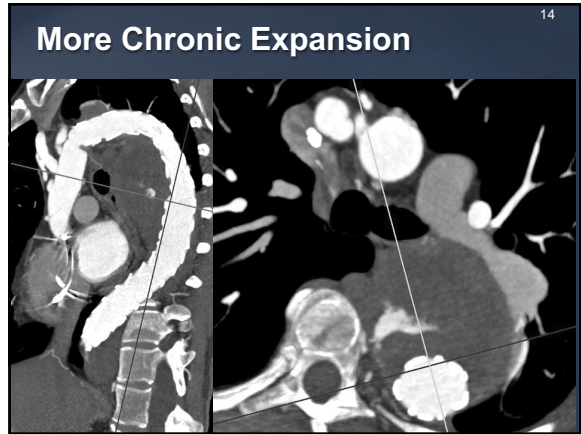
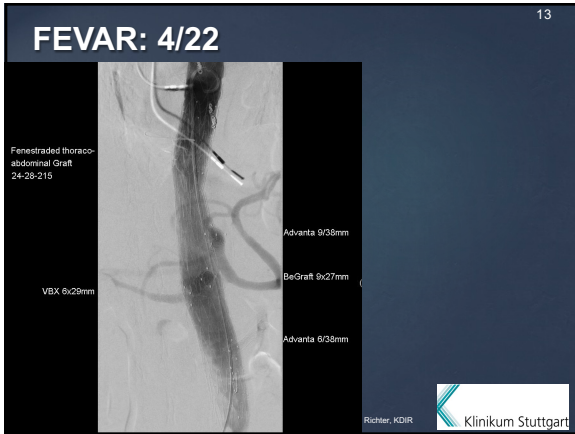
11

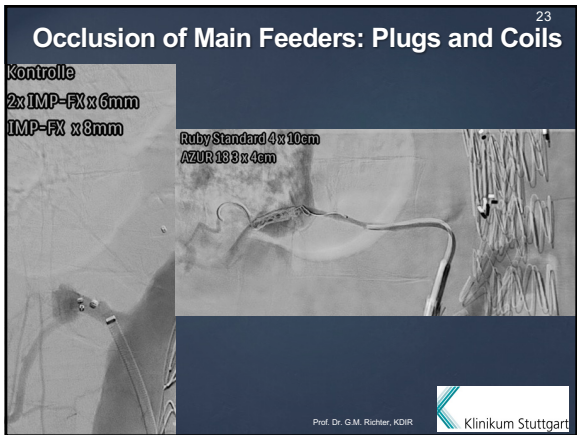
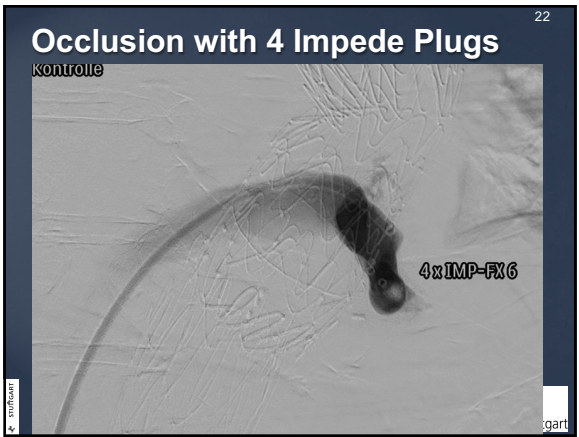
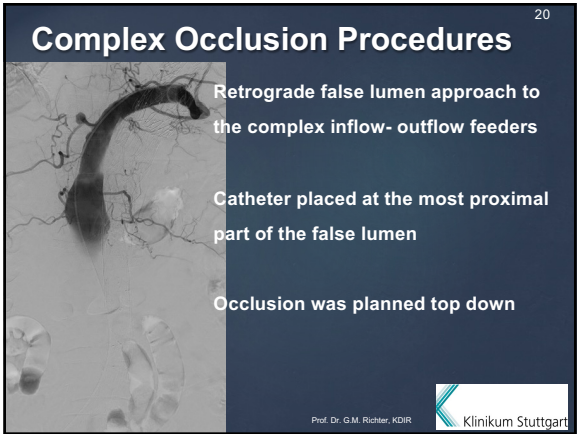
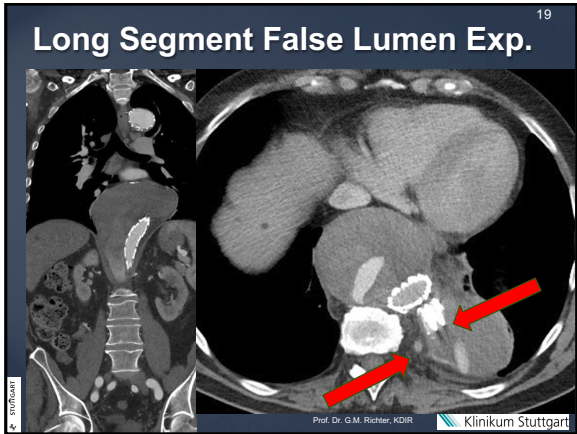


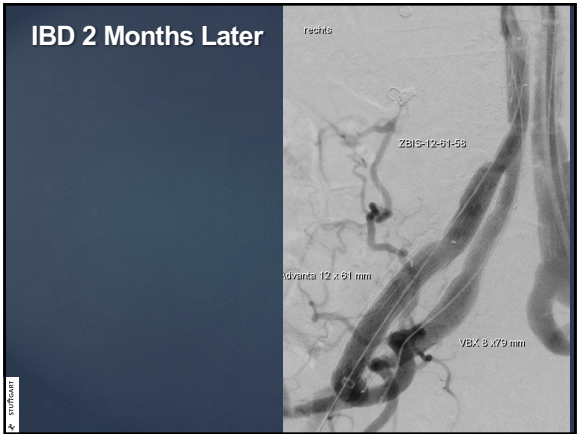
### False Lumen Expansion Shortly

12









27

### Conclusions

**2/3 of patients with open surgery and arch repair require further interventions during follow-up**

<b>TEVAR + FEVAR</b>	<b>43%</b>
<b>TEVAR alone (to Celiac.Tr.)</b>	<b>21%</b>
<b>Side branch Intervention</b>	<b>11%</b>
<b>Visceral artery stenting</b>	<b>5%</b>

Prof. Dr. G.M. Richter, KDIR  
Klinikum Stuttgart