

Hybrid Superficial Venous Arterialization For No Option CLTI: Technical Tips

Miguel Montero-Baker, MD
Houston, TX



Disclosures

- Abbott – consultant
- ASAH – consultant
- BSCI – consultant
- COOK – consultant
- INARI – consultant
- AVEERA – stock options
- HENDOSYN – stock
- HENDOLAT – stock
- Esphrates Vascular – stock options
- Fastwave – stock
- Protono – stock options
- Fastwave – stock
- Life Of Flow – stock
- ORCA research corp – stock
- Second Heart Assist – stock

Summary

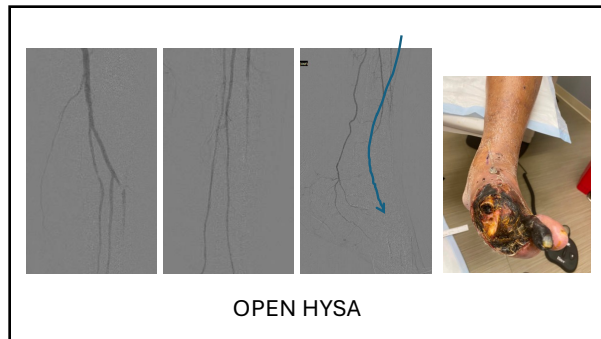
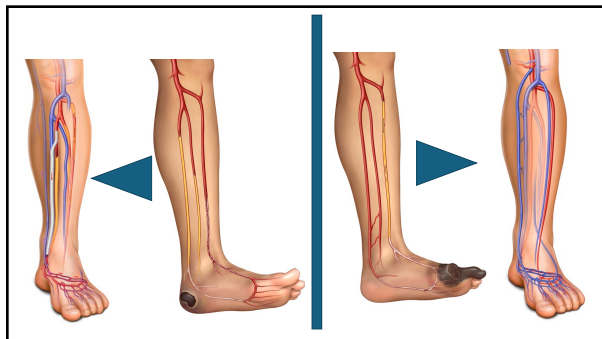
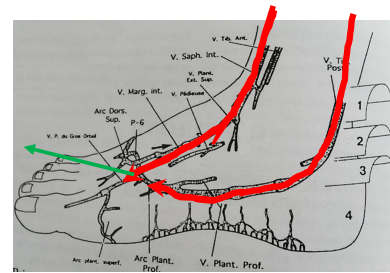
Appropriate selection

Single incision

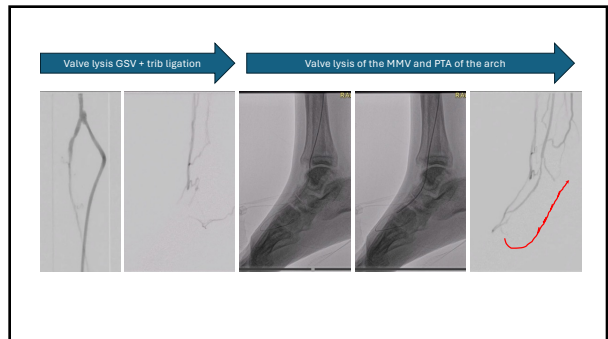
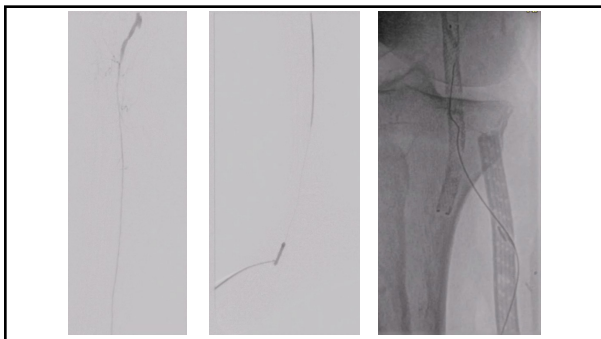
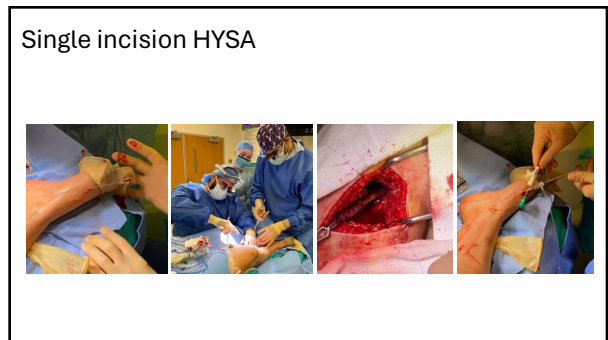
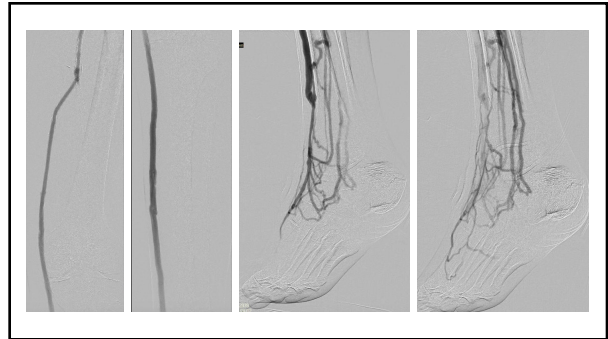
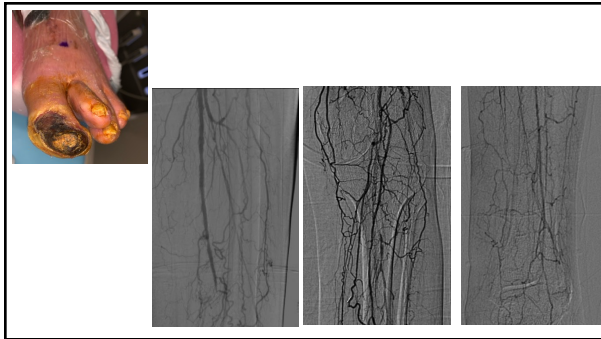
Distal vein (MMV) pre-cannulation

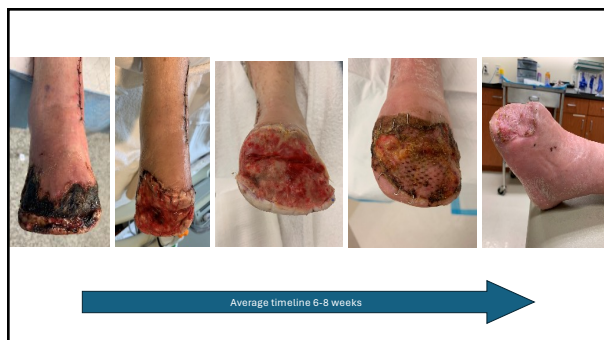
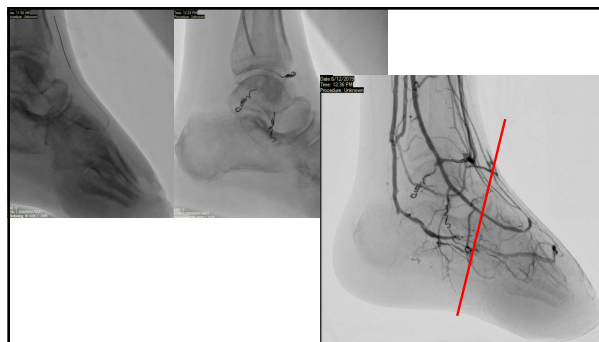
MMV to LPV outflow

Close ultrasound surveillance



OPEN HYSA





Life Of Flow Podcast



HOPE
VASCULAR & PODIATRY

mmontero@hcic.io
[@monteromiguel](#)
[@vascularpodcast](#)