

Update on status of Transcatheter Mitral and Tricuspid Valve Replacement/Repair

Roxana Mehran, MD, FACC, FAHA, MSCAI, FESC
 Mount Sinai Endowed Professor Of Cardiovascular Clinical Research and Outcomes
 Professor of Medicine (Cardiology), and Population Health Science and Policy
 Director, Interventional Cardiovascular Research and Clinical Trials
 Director, Women's Heart and Vascular Center at Mount Sinai
 Icahn School of Medicine at Mount Sinai, New York, NY, USA

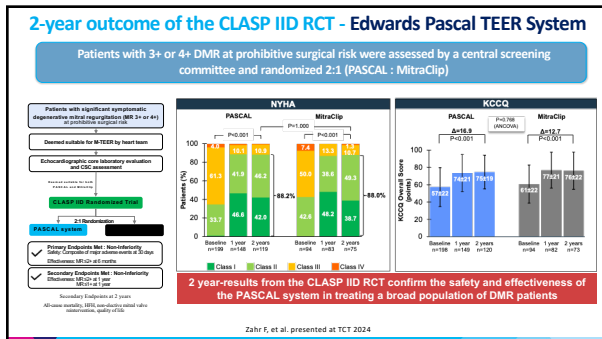
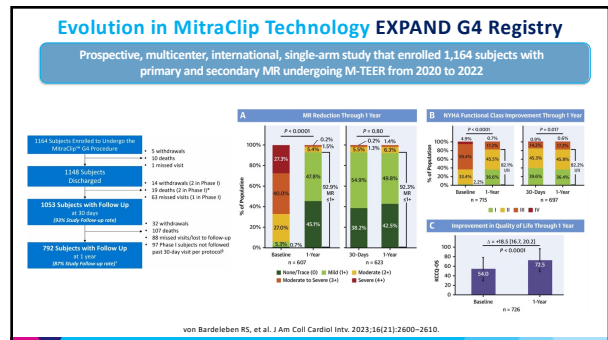
@DrRoxMehran
 Roxana.Mehran@mountsinai.org

Disclosures

Affiliation/Financial Relationship	Company
Research Payments to Institution	Abbott, Affluent Medical, Alleviant Medical, Amgen, AstraZeneca, BAIM, Beth Israel Deaconess Medical Center, Boston Scientific, Bristol-Myers Squibb, CardioWave, CER, Chiesi, Concept Medical, Daiichi Sankyo, Duke, Faraday, Idorsia, Janssen, Medalliance, Medscape, Mediasphere, Medtelligence, Medtronic, Novartis, OrbusNeich, Pi-Cardia, Protensis, RM Global Bioaccess Fund Management, Sanofi, Zoll
Consulting/Personal fees	Chiesi USA, Cordis, Esperion Science/Innovative Biopharma, Gaffney Events, Educational Trust, Global Clinical Trial Partners, Ltd., IQVIA, Medscape/WebMD Global, NovoNordisk, PeerView Institute for Medical Education, TERUMO Europe N.V., Radcliffe
Equity, <1%	Elixir Medical
Scientific Advisory Boards/Committees	AMA - JAMA Cardiology (Associate Editor), ACC (BOT Member, SC Member CTR Program), SCAI (Women in Innovations Committee Member), CRF Faculty, Women as One

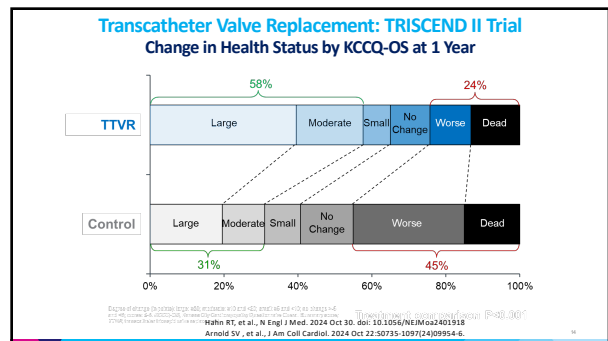
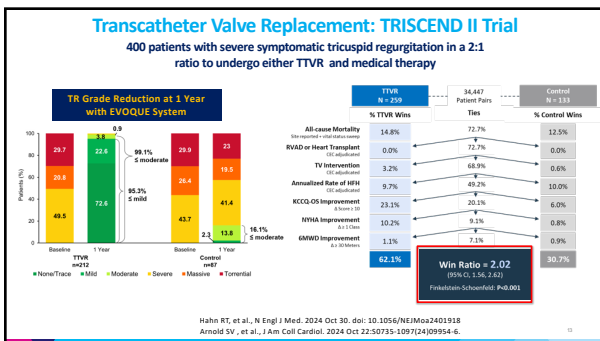
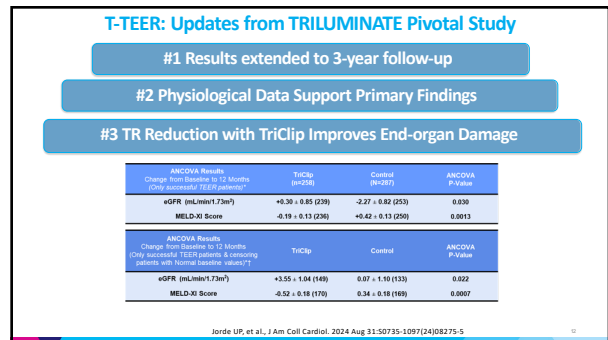
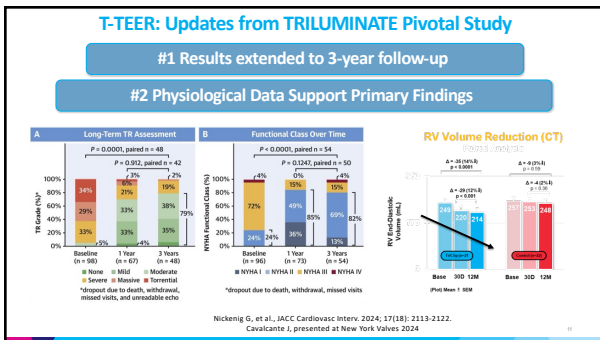
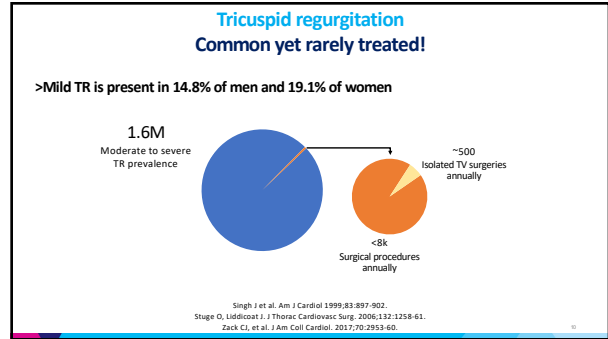
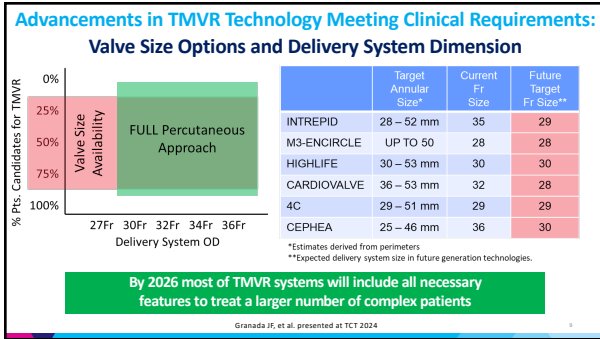
Transcatheter options for mitral valve repair

- Edge-to-Edge:** DragonFly (Hemaphysostoma venosum), MitraClip (Abbott), Pascal (Edwards)
- Indirect Annuloplasty:** Carillon (Cardiac Dimension), ARTO (MVR), Mitral Loop Corledge (Tan-PHJ Medical Company)
- Direct Annuloplasty:** CardioBand (Edwards), Millipede (Boston), Mitralign (Mitralign), AccuClinch (ANGORA Heart)
- Chordal Repair:** NeoChord (NeoChord), Harpoon (Edwards)



The evolution of TMVR design

- SINGLE STEP (ANNULAR):** Intrepid, Cephea, Altavale
- SINGLE STEP (SUB-ANNULAR):** Evoque, Revolve, Symbiosis
- MULTIPLE STEP (SUB-ANNULAR):** Highlife, Sapien M3, Tioga, Innovheart



TAKE-HOME Messages

- ❖ **M-TEER** has been confirmed as a valuable treatment option for patients with degenerative mitral regurgitation
- ❖ **TMVR** has achieved a significant technical feasibility milestone; procedural and long-term outcomes continue to improve thanks to next-generation delivery systems, the wide availability of valve sizes, and LVOT-sparing designs
- ❖ **TRILUMINATE** results have been confirmed and corroborated by evidence showing that T-TEER is associated with RV volume reduction, improvement in RV function, and a reduction in end-organ damage
- ❖ The **TRISCEND II** trial confirms the clinical and quality-of-life benefits of the EVOQUE system for patients with \geq severe TR

THANK YOU FOR YOUR ATTENTION !



 @DrRoxMehran
Roxana.Mehran@mountsinai.org